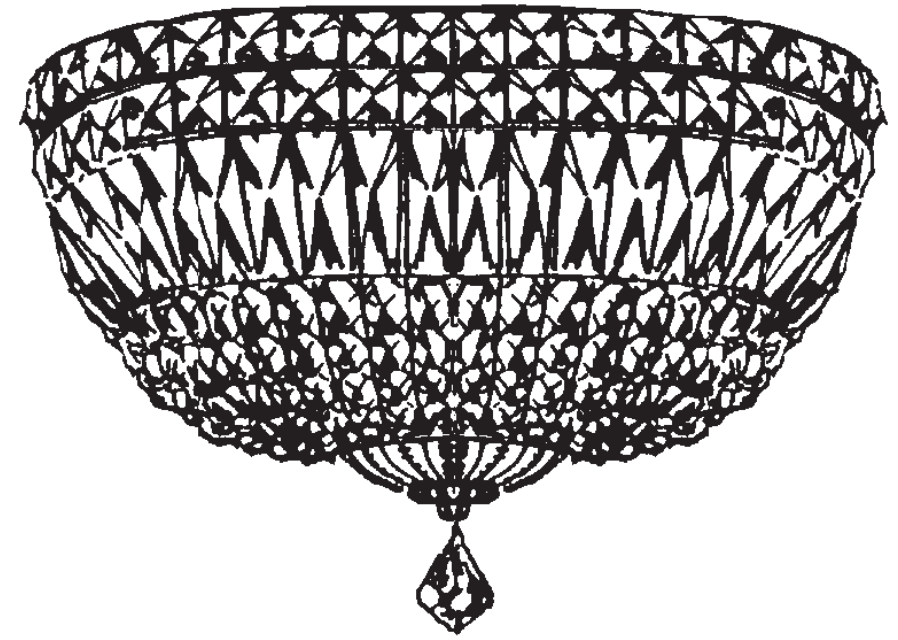




SCHONBEK®

PETIT CRYSTAL DELUXE 6600- __ __ M



THIS DESIGN IS THE PROPRIETARY TRADE DRESS/TRADEMARK OF SWAROVSKILIGHTING, LTD.

3 Lights
Diameter: 10"
Body Length: 7-1/2"
Extension: 5"
Hanging Weight: 4 lbs.

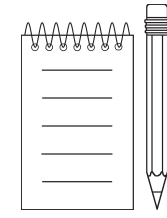
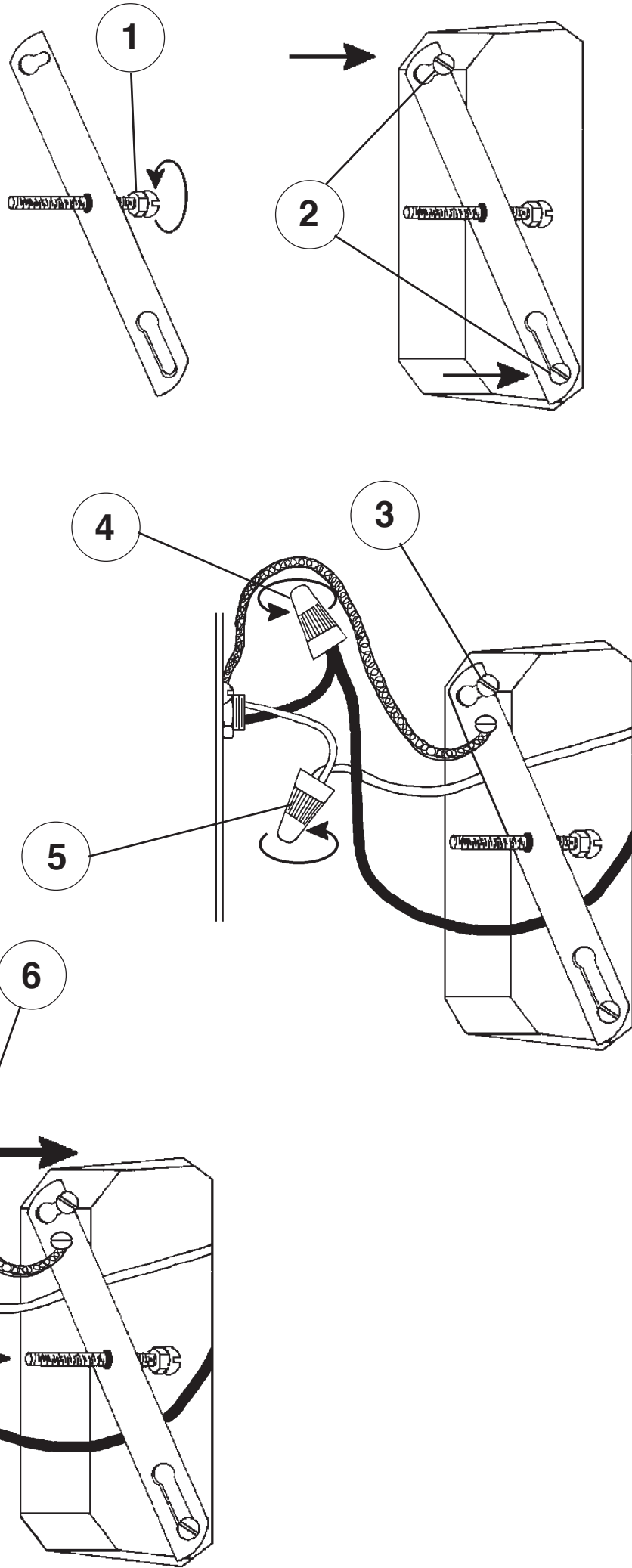


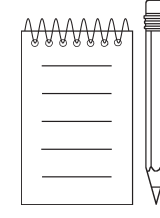
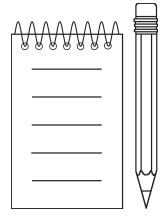
SCHONBEK®

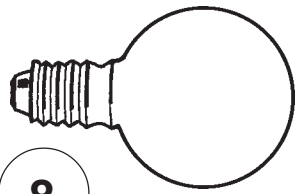
MAX 40 W		110-120 V						

SCHONBEK® is a member of the Swarovski group.

All electrical components must be installed by a licensed electrician in accordance with the National Electric Code and the appropriate local electrical codes.



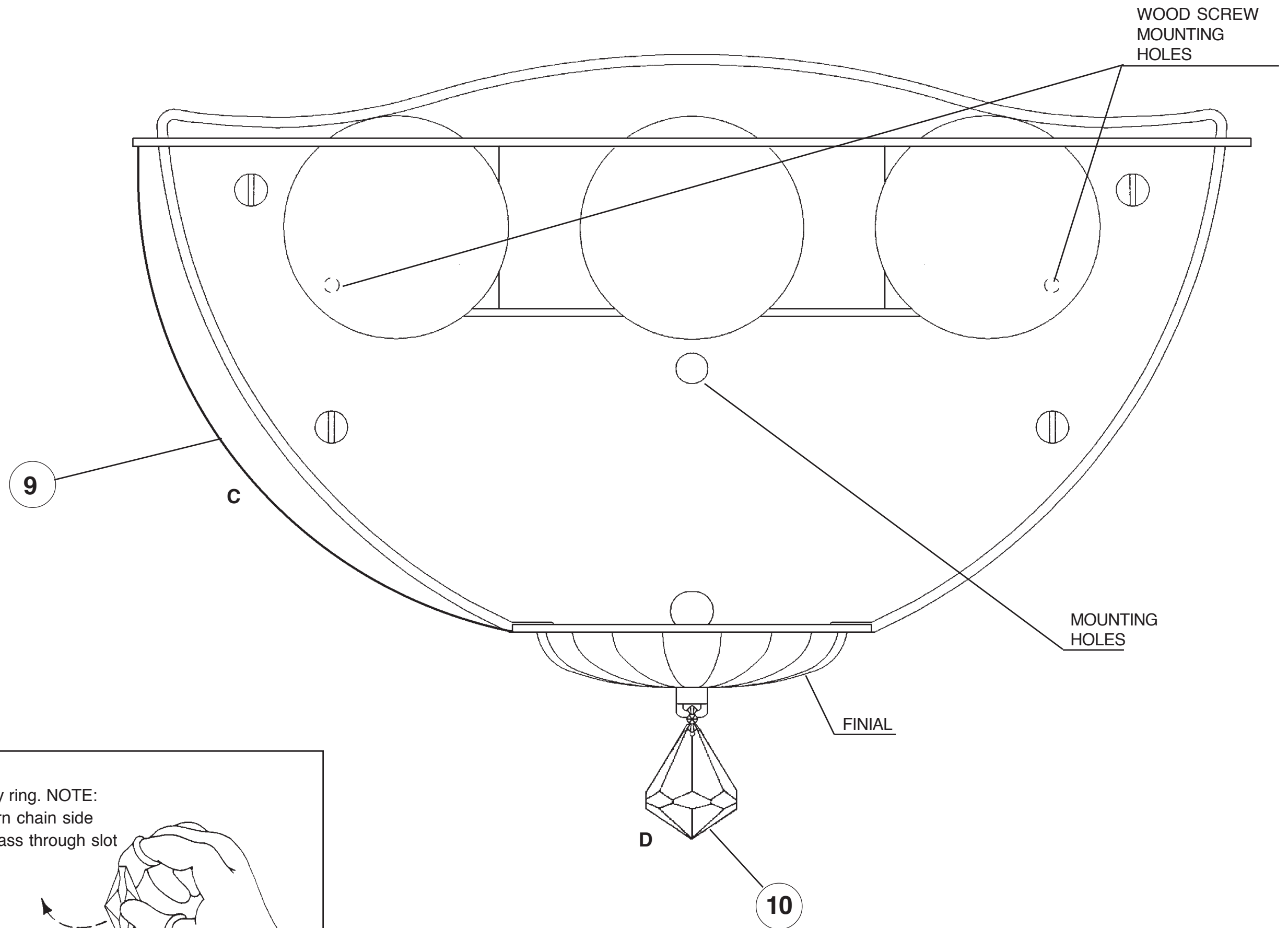




8

You will need 3 - G16-1/2
25 Watts Recommended
40 Watts Max

Install bulbs and be sure
to test fixture **BEFORE**
trimming.



9 Hook Chains "C" into the gallery ring. NOTE:
Hold onto the square stone and turn chain side
ways, this will allow connector to pass through slot
in metal ring. Turn
square stone to face the
outside of the fixture
and lower it until it
seats itself in the
ring. Hook the other end
into the pin holes of the finial.

